

# **UPort™ 200/400 Series Quick Installation Guide**

---

**Version 5.3, April 2025**

**Technical Support Contact Information**  
**[www.moxa.com/support](http://www.moxa.com/support)**



© 2025 Moxa Inc. All rights reserved.

**P/N: 1802002001017**



## Overview

The UPort™ 200/400 Series industrial-grade USB 2.0 hubs expand one USB port to four or seven ports. The hubs provide true USB 2.0 Hi-Speed 480 Mbps data transmission through each port, even for heavy-load applications. As USB-IF certified products, the UPort™ 200/400 Series have passed high speed compliance testing and are eligible to bear the USB logo. Besides providing ESD level 4 protection from static damage, the UPort™ 200/400 Series offers a power jack and terminal block dual power input solution for industrial environments.

### **The following models comprise the UPort™ 400 Series:**

UPort™ 404: 4-port industrial grade USB hub, adapter included.  
UPort™ 407: 7-port industrial grade USB hub, adapter included.  
UPort™ 404-T: 4-port industrial grade USB hub, wide temperature.  
UPort™ 407-T: 7-port industrial grade USB hub, wide temperature.

### **The following models comprise the UPort™ 200 Series:**

UPort™ 204: 4-port entry level USB hub, adapter included.  
UPort™ 207: 7-port entry level USB hub, adapter included.

## Features

- Hi-Speed USB 2.0 for up to 480 Mbps USB transmission
- USB-IF certification
- 15KV ESD Level 4 protection for all USB ports
- Comprehensive diagnostic LEDs

### **UPort™ 400 Series features:**

- Dual power input supply (power jack and terminal block)
- Rugged metal housing
- DIN-rail and wall mountable
- Bus power or external power options (UPort™ 404)

### **UPort™ 200 Series features:**

- External power input supply (power jack)
- Rugged housing
- Wall mountable
- Bus power or external power options (UPort™ 204)

# Ordering Information

## Package Checklist

The UPort™ 200/400 Series package should contain the following items. If any of these items are missing or damaged, contact Moxa for replacement.

- 1 UPort 200 or 400 USB hub
- USB cable: CBL-USBA/B-100
- 100 to 240 VAC power adapter suitable for your region (excluding T models)
- Wall-mounting kit: WK-35-02 (for UPort 400 models only)
- Quick installation guide (printed)
- Warranty card

## Optional Accessories (can be purchased separately)

For the UPort 400 Series:

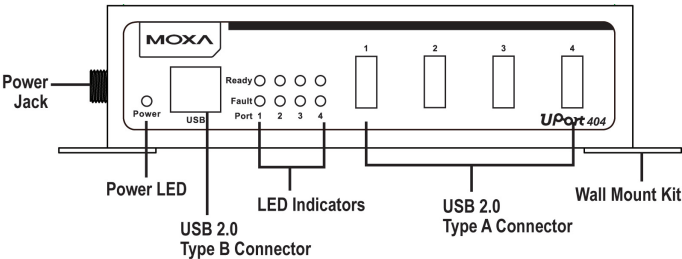
- DK-UP1200: Flat DIN-rail mount with WK-35-02 (2 wall-mounting plates) and DK35A (2 DIN-rail plates with four screws)
- DK-25-01: Edge DIN-rail mount (25 x 48.3 mm DIN-rail kit with two screws)

**NOTE** The operating temperature of the power adapter in the box is from 0 to 40°C. If your application is not in this range, use a power adapter supplied by UL Listed External Power Supply (The power output meets SELV and LPS and rated 12 - 48 VDC, minimum current 0.73 A). Moxa has power adapters with wide temperature ranges (-40 to 75°C, -40 to 167°F), the PWR-12150-(plug type)-SA-T Series, for your reference.

# Hardware Introduction

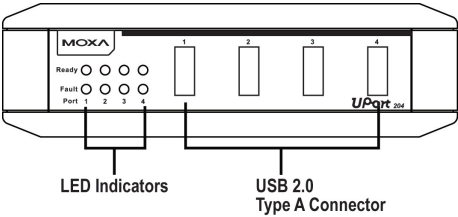
An example of the UPort™ 404 front panel:

## Front View

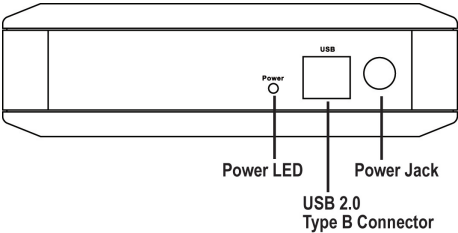


An example of the UPort™ 204 front/back panel:

**Front View**



**Back View**



**LED Indicators**

The LED indicators on the panel are used to display status as follows:

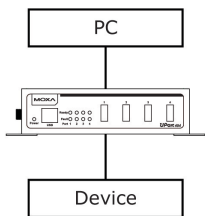
Type	Color	Meaning
Ready	Green	Steady on: Power is on and UPort™ is functioning normally
	Off	1. No device connected 2. Device cannot be detected
Fault	Red	Steady on: Device over current is detected
Power	Yellow	Bus power
	Green	External power

**Power Input Supply**

The following table shows the power input supply.

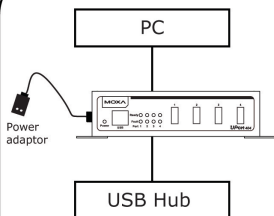
	UPort™ 404	UPort™ 407	UPort™ 204	UPort™ 207
Bus Power	✓	–	✓	–
Self-Power	✓	✓	✓	✓

### Scenario 1



Note:  
When only connecting devices to the UPort™ 204/404, you can use bus power connection.

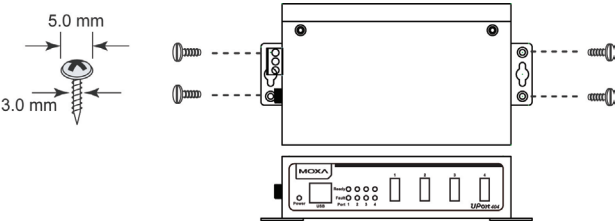
### Scenario 2



Note:  
When connecting the UPort™ 204/404 to a USB hub, we recommend using an external power connection.

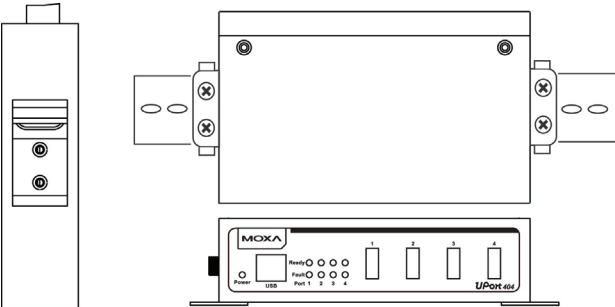
**Wall Mounting**

The UPort™ 400 Series comes with two metal attachment plates to allow installation on a wall. First, attach the brackets to the back of the UPort™ 400 with screws. Next, mount the unit to a wall with screws. Screws should be less than 5.0 mm in head diameter, and less than 3.0 mm in shaft diameter.



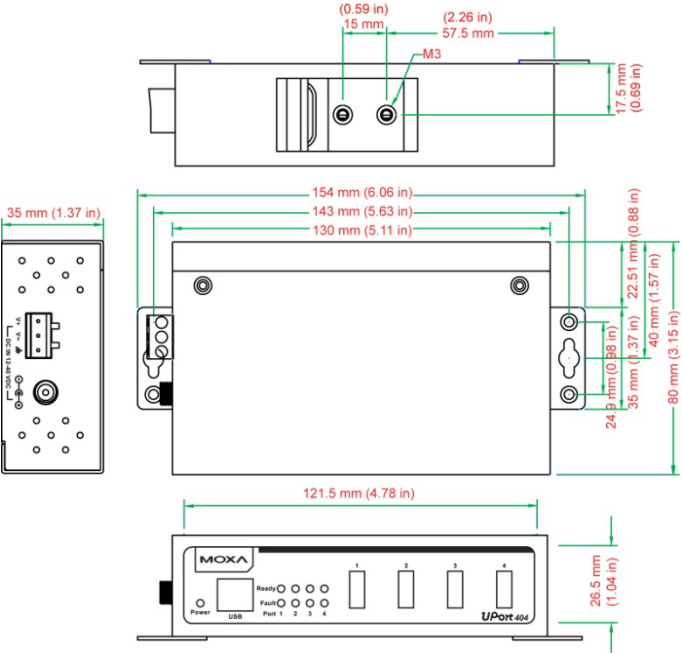
**DIN-Rail Mounting**

The UPort™ 400 Series can be mounted on a DIN rail; the required accessory must be purchased separately. The DIN-rail attachments should be oriented with the metal springs on top.

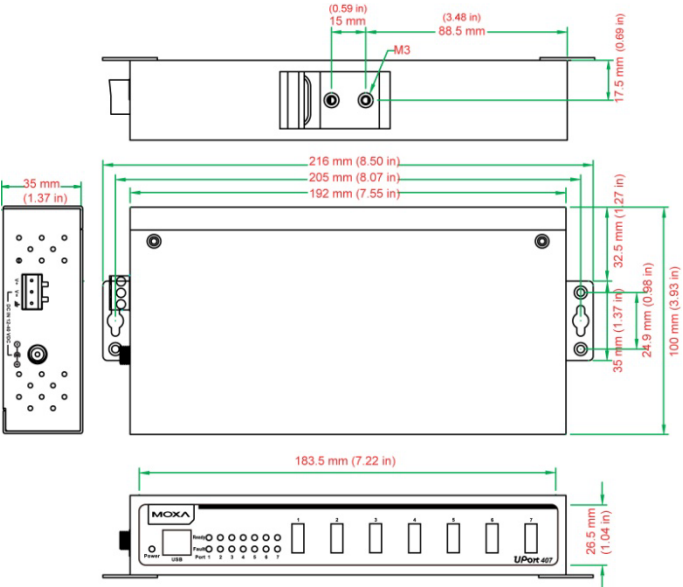


Dimensions

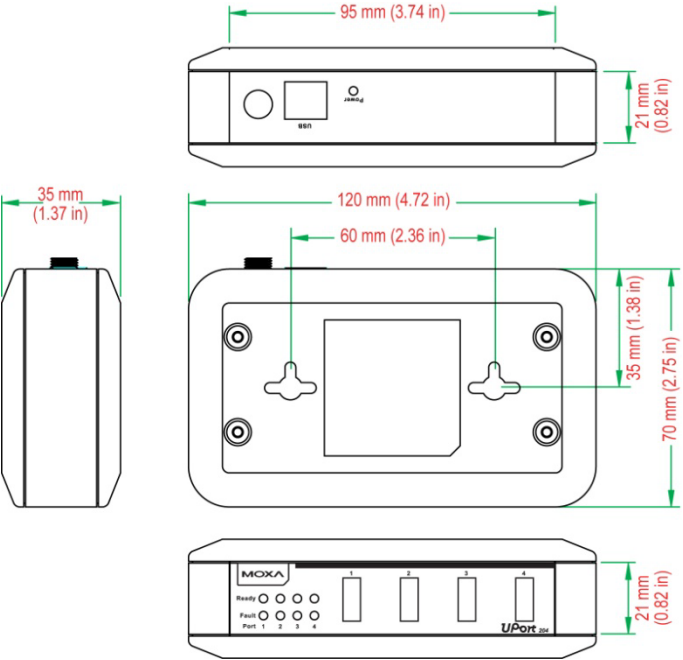
UPort™ 404



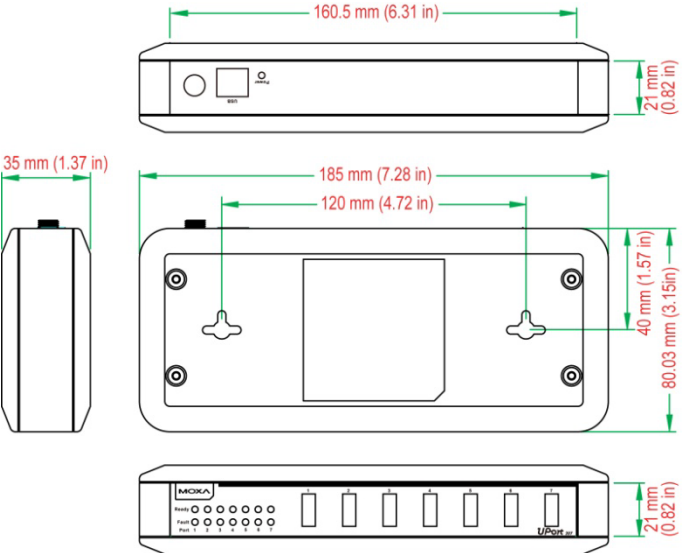
UPort™ 407



UPort™ 204



UPort™ 207





## Specifications

### USB Interface

Compliance: USB 1.1/2.0 compliant

Upstream: 1 USB port, Type B connector

Downstream:

UPort™ 204/404: 4 USB ports, Type A connectors

UPort™ 207/407: 7 USB ports, Type A connectors

Speed: 480 Mbps (Hi-Speed USB) and 12 Mbps (Full-Speed USB)

### Physical Characteristics

Housing:

UPort™ 200 series: Polycarbonate (PC)

UPort™ 400 series: Aluminum

Dimensions:

UPort™ 404/404-T: 80 x 35 x 130 mm (3.15 x 1.38 x 5.12 in)

UPort™ 407/407-T: 100 x 35 x 192 mm (3.94 x 1.38 x 7.55 in)

UPort™ 204: 70 x 35 x 120 mm (2.76 x 1.38 x 4.72 in)

UPort™ 207: 80 x 35 x 185 mm (3.15 x 1.38 x 7.28 in)

### Environmental Limits

Operating Temperature:

Standard Models: 0 to 60°C (32 to 140°F)

Wide Temp. Models: -40 to 85°C (-40 to 185°F)

Operating Humidity: 5 to 95% RH

(For use in Pollution Degree 2 environments)

Storage Temperature:

Standard Models: -20 to 75°C (-4 to 167°F)

Wide Temp. Models: -40 to 85°C (-40 to 185°F)

*Note: The operating temperature of the power adapter in the box is from 0 to 40°C. If your application is not in this range, use a power adapter supplied by UL Listed External Power Supply (The power output meets SELV and LPS and rated 12 - 48 VDC, minimum current 0.73 A). Moxa has power adapters with wide temperature ranges (-40 to 75°C, -40 to 167°F), the PWR-12150-(plug type)-SA-T series, for your reference.*

### Power Requirements

Input Voltage: 12 to 40 VDC (external power)

Power Consumption:

UPort™ 404:

1300 mA @ 12 VDC, 690 mA @ 24 VDC, 470 mA @ 36 VDC

UPort™ 407:

2300 mA @ 12 VDC, 1130 mA @ 24 VDC, 790 mA @ 36 VDC

UPort™ 204:

1210 mA @ 12 VDC, 610 mA @ 24 VDC, 430 mA @ 36 VDC

UPort™ 207:

2170 mA @ 12 VDC, 1070 mA @ 24 VDC, 730 mA @ 36 VDC

Regulatory Approvals:

EN 61000-3-2, EN 61000-3-3, EN 61000-4-2, EN 61000-4-3,

EN 61000-4-4, EN 61000-4-5, EN 61000-4-6, EN 61000-4-8,

EN 61000-4-11, EN 61000-6-2, EN 61000-6-4, FCC Part 15 Class A,

UL508, LVD

### Warranty

Warranty Period: 5 years

Details: See [www.moxa.com/warranty](http://www.moxa.com/warranty)

# Compliance Notice



## CE Warning

This is a Class A product. In a domestic environment, this product may cause radio interference in which case the user may be required to take appropriate measures.

# Federal Communications Commission Statement

FCC - This device complies with part 15 of the FCC Rules. Operation is subject to the following two conditions: (1) This device may not cause harmful interference, and (2) this device must accept any interference received, including interference that may cause undesired operation.



## FCC Warning

This equipment has been tested and found to comply with the limits for a Class A digital device, pursuant to part 15 of the FCC Rules. These limits are designed to provide reasonable protection against harmful interference when the equipment is operated in a commercial environment. This equipment generates, uses, and can radiate radio frequency energy and, if not installed and used in accordance with the instruction manual, may cause harmful interference to radio communications. Operation of this equipment in a residential area is likely to cause harmful interference in which case the user will be required to correct the interference at his own expense.



BSMI Warning

警告：為避免電磁干擾，本產品不應安裝或使用於住宅環境。

限用物質含有情況標示聲明書

Declaration of the Presence Condition of the Restricted Substances Marking

設備名稱：工業級 <b>USB</b> 集線器		型號（型式）：UPort 407, UPort 407-T				
Equipment name		Type designation (Type)				
單元 Unit	限用物質及其化學符號					
	Restricted substances and its chemical symbols					
	鉛 Lead (Pb)	汞 Mercury (Hg)	鎘 Cadmium (Cd)	六價鉻 Hexavalent chromium (Cr <sup>+6</sup> )	多溴聯苯 Polybrominated biphenyls (PBB)	多溴二苯醚 Polybrominated diphenyl ethers (PBDE)
外殼	○	○	○	○	○	○
印刷電路板及其電子組件	-	○	○	○	○	○
電纜/電線/連接器	-	○	○	○	○	○
電源設備	-	○	○	○	○	○
機械部件-金屬	○	○	○	○	○	○
機械部件-非金屬	○	○	○	○	○	○
備考 1. “超出 0.1 wt %”及 “超出 0.01 wt %”係指限用物質之百分比含量超出百分比含量基準值。 Note 1: “Exceeding 0.1 wt %” and “exceeding 0.01 wt %” indicate that the percentage content of the restricted substance exceeds the reference percentage value of presence condition.						
備考 2. “○”係指該項限用物質之百分比含量未超出百分比含量基準值。 Note 2: “○” indicates that the percentage content of the restricted substance does not exceed the percentage of reference value of presence.						
備考 3. “—” 係指該項限用物質為排除項目。						

Note 3: The “—” indicates that the restricted substance corresponds to the exemption.

產品名稱： Industrial USB Hub 工業級 USB 集線器

型號： UPort 407, UPort 407-T

製造商資訊：

Moxa 四零四科技股份有限公司

+886-3-273-7575

桃園市八德區和平路 1111 號

KC (UPort 407 only)

사용자안내문 (User Guide)

이 기기는 업무용 환경에서 사용할 목적으로 적합성평가를 받은 기기로서가정용 환경에서 사용하는 경우 전파간섭의 우려가 있습니다.

(This equipment has KC approval for use in industrial environments and could possibly interfere with household equipment.)

기 종별 Type of Equipment	사용자안내문 User Guide
A 급 기기 (업무용 방송 통신기 자재)  Class A Equipment (Broadcasting and Communication Equipment for Industrial and Commercial Use)	이 기기는 업무용 (A 급) 전자파 적합 기기로서 판매자 또는 사용자는 이 점을 주의하시기 바라며 가정 외의 지역에서 사용하는 것을 목적으로 합니다.  This equipment is the EMC conformity equipment (Class A) for Industrial and Commercial Use. The seller or user should take note of this as this equipment can be used in places that exclude homes.
B 급 기기 (가정용 방송 통신 기자재)  Class B Equipment (Broadcasting and Communication Equipment for Home Use)	이 지기는 가정용 (B 급) 전자파적합 기기로서 주로 가정에서 사용하는 것을 목적으로 하며, 모든 지역에서 사용할 수 있습니다.  This equipment is the EMC conformity equipment (Class B) for home use and can be used mainly at homes, as well as in other areas.